

About Endsleigh Park

The vision of Endsleigh park has been to blend town with country in a conservation park.

All residents jointly own and have access to a well treed, well maintained, 18 hectares of common land. This will consist of a mixture of walkways, cycle paths, sport/recreational areas, garden/fruit tree areas, wetlands/ponds, extensive native revegetation, amenity plantings, sculptures/land art and common areas for socialising.

To date we have planted 30,000 trees.

This subdivision has been designer lead from its inception. Initially extra care was taken in establishing and maximizing the integrity of the landscape to ensure that it will function as a sustainable low input ecosystem in the long term.

Once these fragile areas were established and set aside, the 25 house lots were then designed to fit within this structure. Each lot has been planned with a building envelope to protect visual and acoustic privacy.

The development has specific covenant requirements in place to maintain and protect the environment and purchaser investments.

The house sites have typically been arranged along ridge lines in small clusters with common areas, to encourage socialising between residents, giving a feeling of security, whilst acknowledging the need for privacy.

The philosophy has been to create a village type atmosphere within an ecological framework.

The lot sizes vary according to topography but typically are a little over a quarter acre (1000 square meters) in size. The layout ensures that house sites will have both privacy and breathtaking views.

Planting has been ongoing for the last 22 years, consequently even on the top ridges there are mature trees. These plantings extend between lots as well giving shelter, privacy and encourage bird life throughout the site.

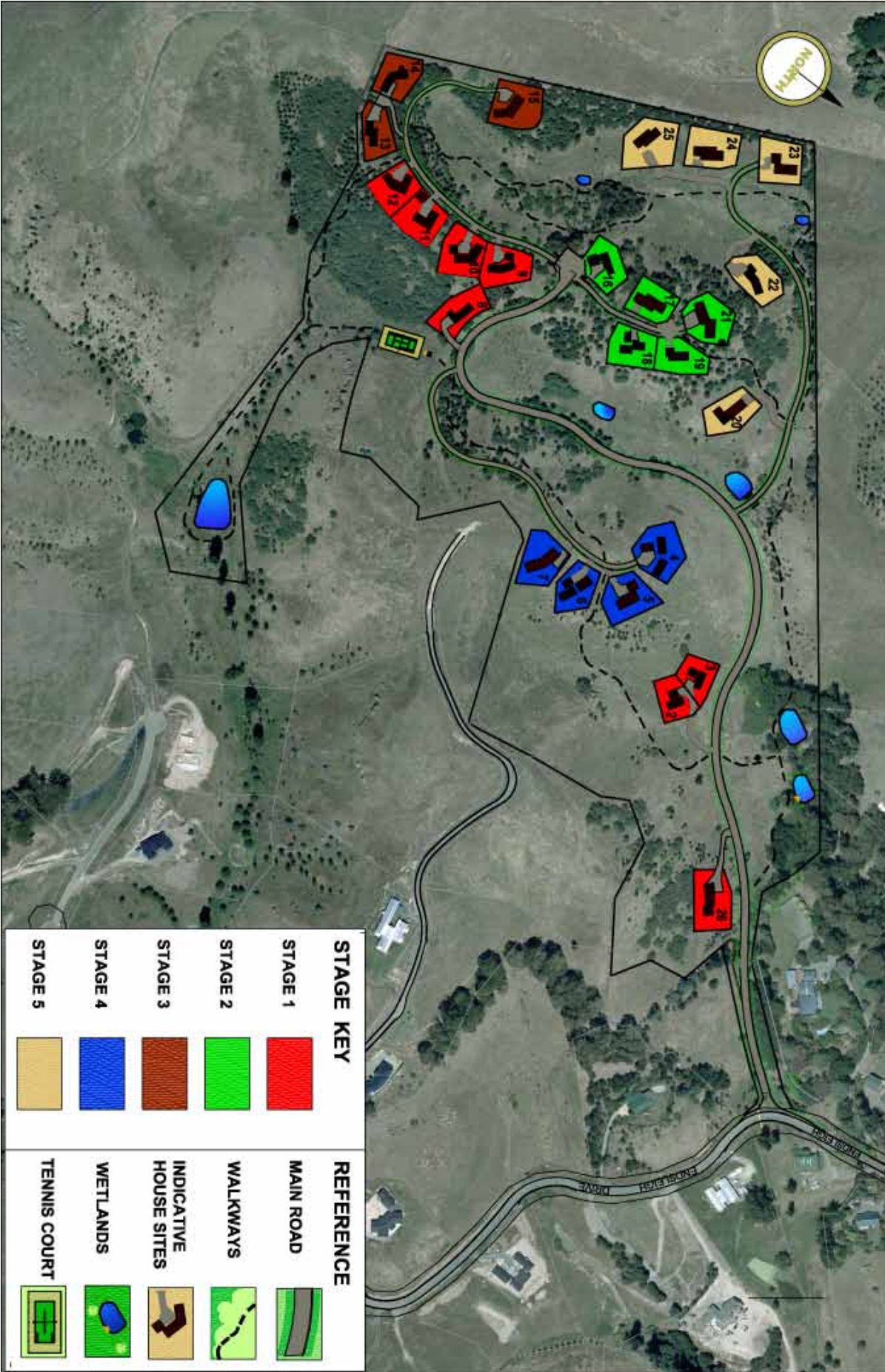




- Rural/ residential lifestyle option that treads lightly on the land, of a type that will assist a sense of community to develop.
- Lots in small clusters within a sustainable planted rural landscape.
- 25 lot Farm Park with each site having title to an undivided 1/25th share (no further subdivision)
- Residents society in place (in future to be run by the lot owners) to maintain the 40 acres of common land and amenities.
- Amenities include: tennis court, playing fields, orchards, wetlands, regenerating bush, walkways etc.
- Town water supply, power and telecommunications to all site boundaries.
- Fantastic views of snow capped mountains, Te Mata peak, Hastings, Havelock North, Napier and the ocean from most sites.
- Located 5 minutes from Havelock North, close to a range of top schools and boutique shopping.
- Total land area 21.5 hectares or 50 acres.
- Lot sizes average over 1000 sq meters or quarter acre.
- The large open areas outside the homestead platforms will remain largely in their natural state with most of the plantings already in place.
- Building /landscape covenants to protect your investment.
- Input from a designer/architect is encouraged to meet the design criteria and to capitalise on the opportunities suggested by each site's natural setting.
- Homes should incorporate contemporary sustainable best building practice in all aspects (input at the design stages from the design review committee).

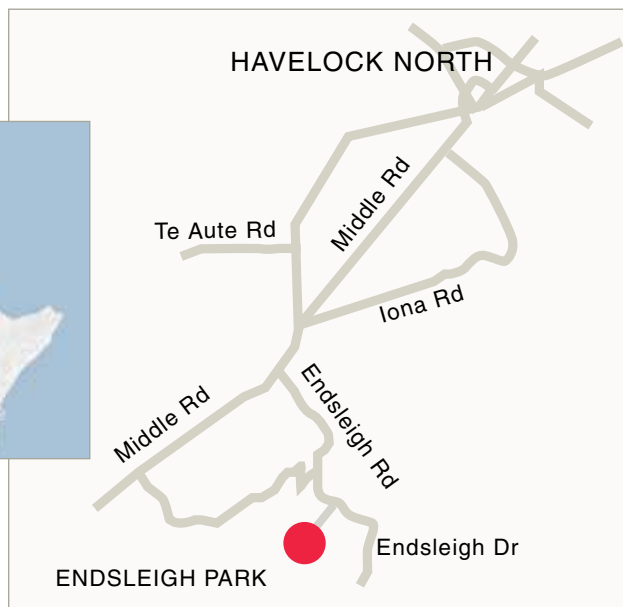
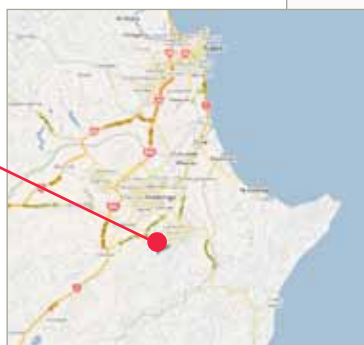


Site Map





Location



Contact Us

Endsleigh Park is being marketed by Tremains Real Estate.



Phone: 06 834 2864

www.tremains.co.nz

Louise Addis

Cell: 027 672 2099

Email: louise.addis@tremains.co.nz

Lex Benson-Cooper

Cell: 021 375 030

Email: lexbensoncooper@yahoo.com

